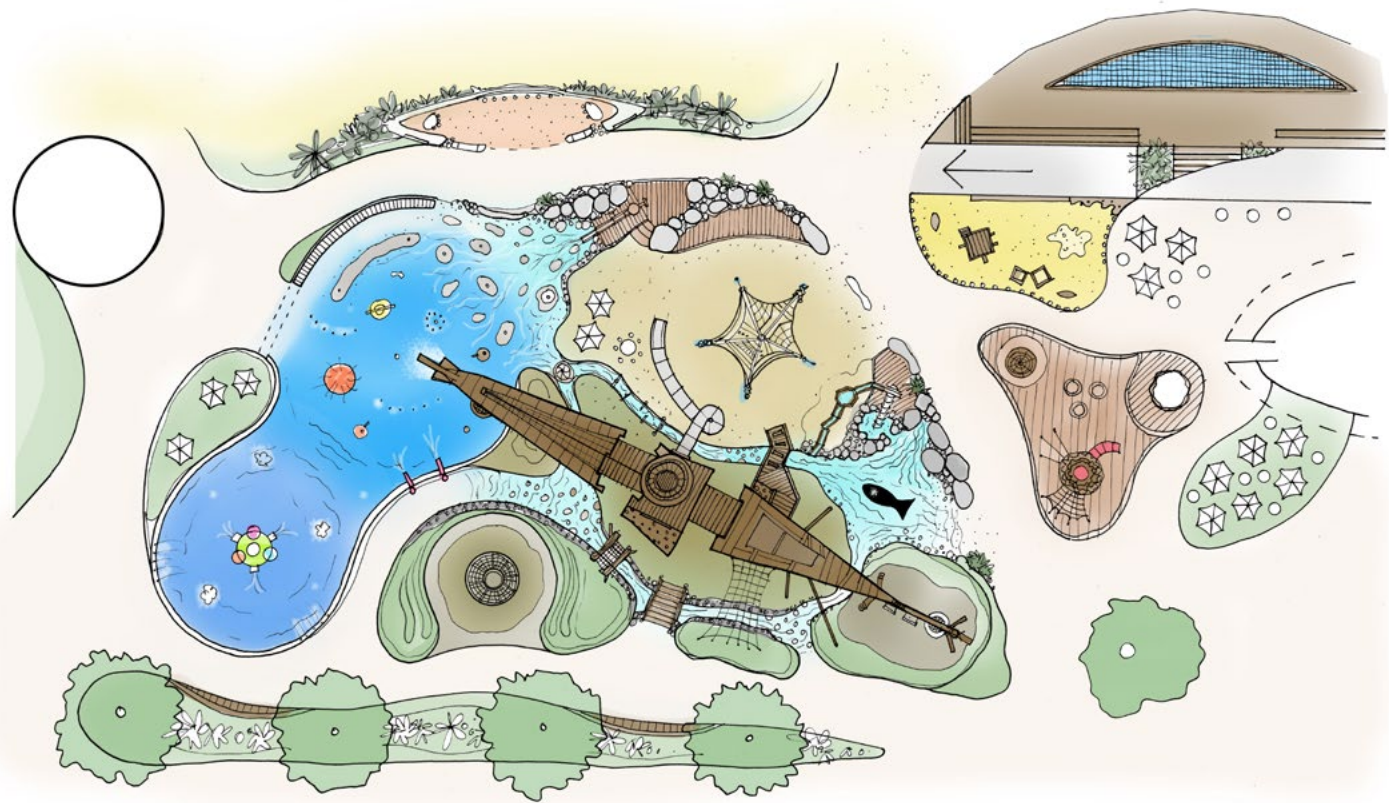


A playground should be a place of wonder, excitement and joy. Somewhere you can run free, playing on your own or with your friends, discovering the equipment, and just having fun. Our vision is based on your ideas and from listening to the children of New Brighton.



WE WANT YOUR FEEDBACK

If you'd like to provide feedback, please fill out the form provided and return to the Drop Boxes at the New Brighton Library, PaperPlus, New Brighton Project office, the Regeneration Hub, or return via Freepost Mail. You can also provide feedback online at www.ccc.govt.nz/haveyoursay. DCL will also be present at the Saturday Seaside Market from the 24th of June for the next month.

WHO IS DEVELOPMENT CHRISTCHURCH LIMITED (DCL)?

DCL is Christchurch's Urban Development Agency. We work with Christchurch City Council and the private sector to make a positive impact on the regeneration of Christchurch, and on the city's urban environment.

WHAT ABOUT THE WHALE?

We are giving your whale a facelift and reusing it as an integral part of the water-play fun.

WIND, SUN, AND SEATING

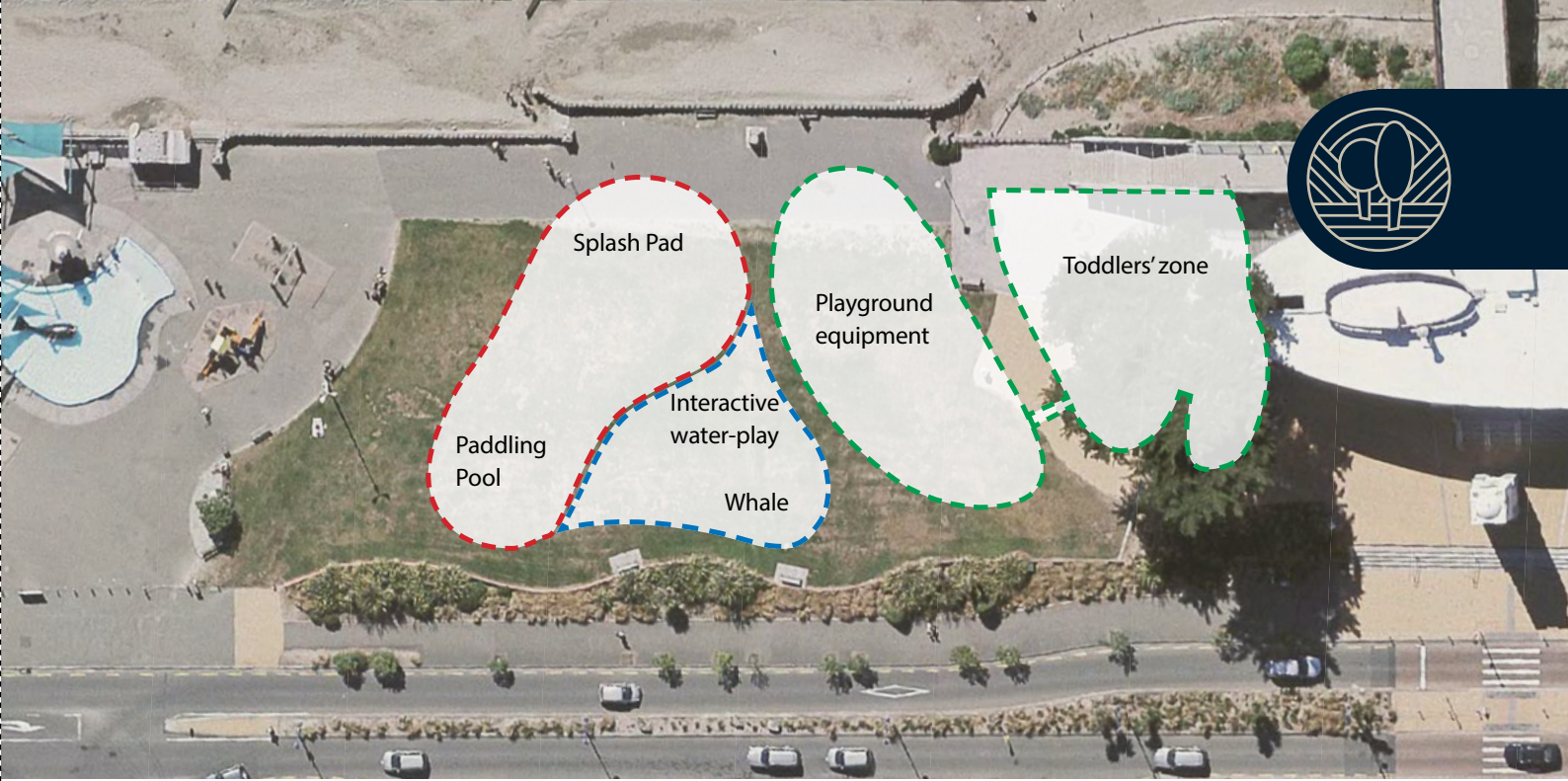
From our conversations with the community, the provision of shading, seating, and protection from the wind is extremely important. We have taken this on board and there will be plenty of seating, with integrated shade and wind protection features. In addition, we will be sculpting the landscape and adding special structures to make the playground a pleasant environment all year round.

WHAT HAPPENS NEXT?

Your feedback will be used to further develop the playground design. At the same time, we are working with Christchurch City Council and with Environment Canterbury to obtain the necessary consents to allow the playground construction works to commence later this winter.

When construction starts we will need to use the land where the playground is now, so we will need to close it for some time. We hope the excitement of the new playground makes up for any inconvenience during this time.

To view this document online, visit www.dcl.org.nz



**NEW BRIGHTON BEACHSIDE PLAYGROUND
CONCEPT DESIGN**



An artist's impression looking from Marine Parade to the sea

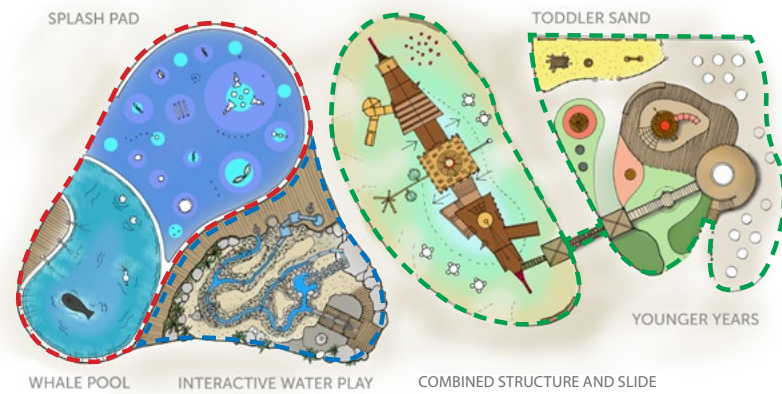
Development Christchurch Limited (DCL) is seeking feedback and ideas on what will be New Brighton's brand new Beachside Playground.

In November 2016, DCL asked the community for feedback on the proposed Hot Salt Water Pools and Beachside Playground. In December 2016, Christchurch City Council approved \$8.03m funding for the Beachside Playground and coastal protection works. This funding will help the New Brighton Surf Life Saving Club to rebuild as part of the development.

Following your previous feedback in November 2016, we have been working with local school pupils to hear first-hand what our young experts would like in their new playground and this has helped develop this concept design.

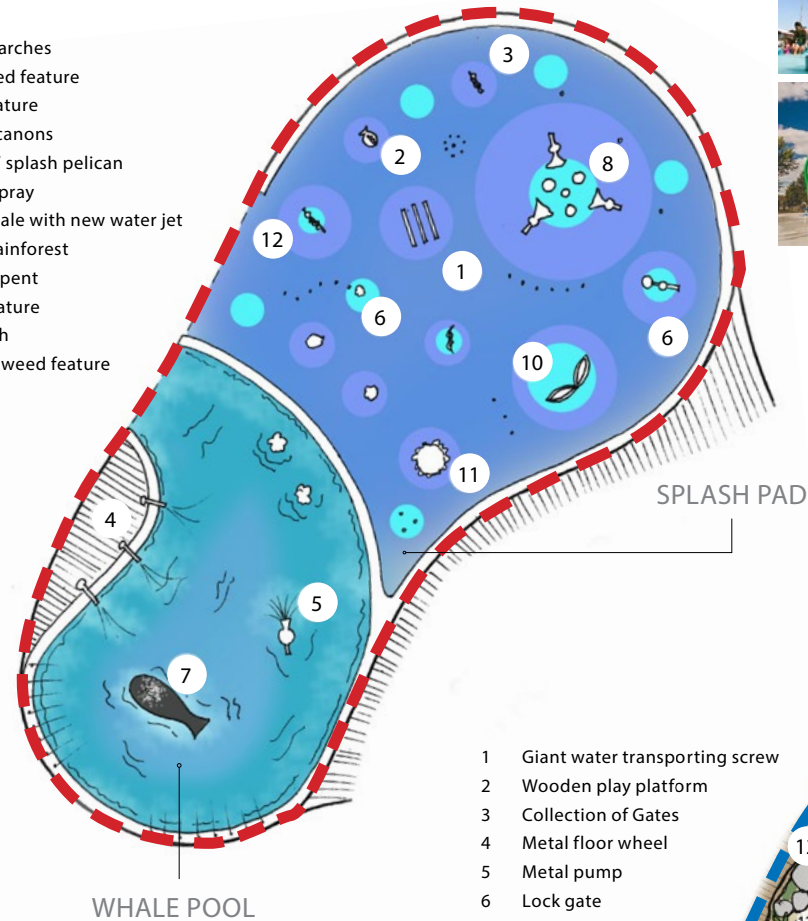
There are three distinctive play zones — a water-play and splash pad zone, a dry play zone, and a toddlers' zone. We are inviting community feedback on these three concepts.

To make sure we receive your feedback in time, please submit your responses by Sunday 23rd of July 2017. Once we have received your feedback we will complete the design and remain on track for a Summer 2017 opening.



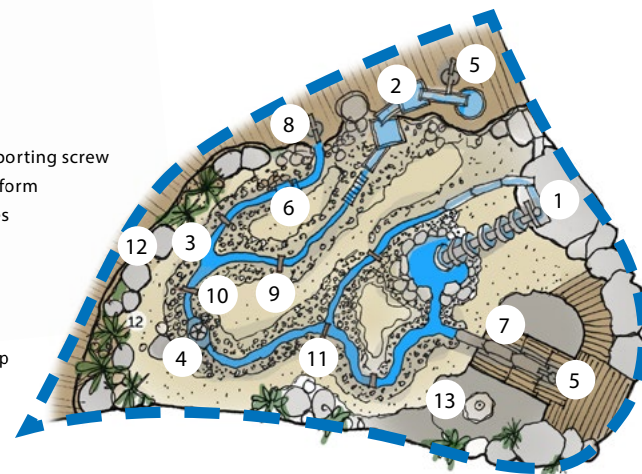
OVERALL PLAN

- 1 Trio of arches
- 2 Seaweed feature
- 3 Fish feature
- 4 Water canons
- 5 Spin 'n' splash pelican
- 6 Team spray
- 7 Old whale with new water jet
- 8 Alien rainforest
- 9 Sea serpent
- 10 Leaf feature
- 11 Jellyfish
- 12 Tall seaweed feature

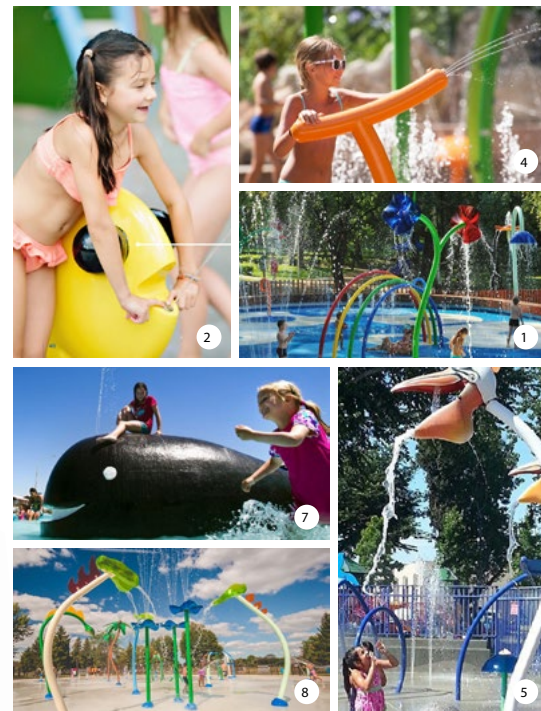


FEEL

- 1 Giant water transporting screw
- 2 Wooden play platform
- 3 Collection of Gates
- 4 Metal floor wheel
- 5 Metal pump
- 6 Lock gate
- 7 Metal trays
- 8 Metal spring pump
- 9 Lock gate
- 10 Bar gate
- 11 River fork
- 12 Landscaping
- 13 Push spring



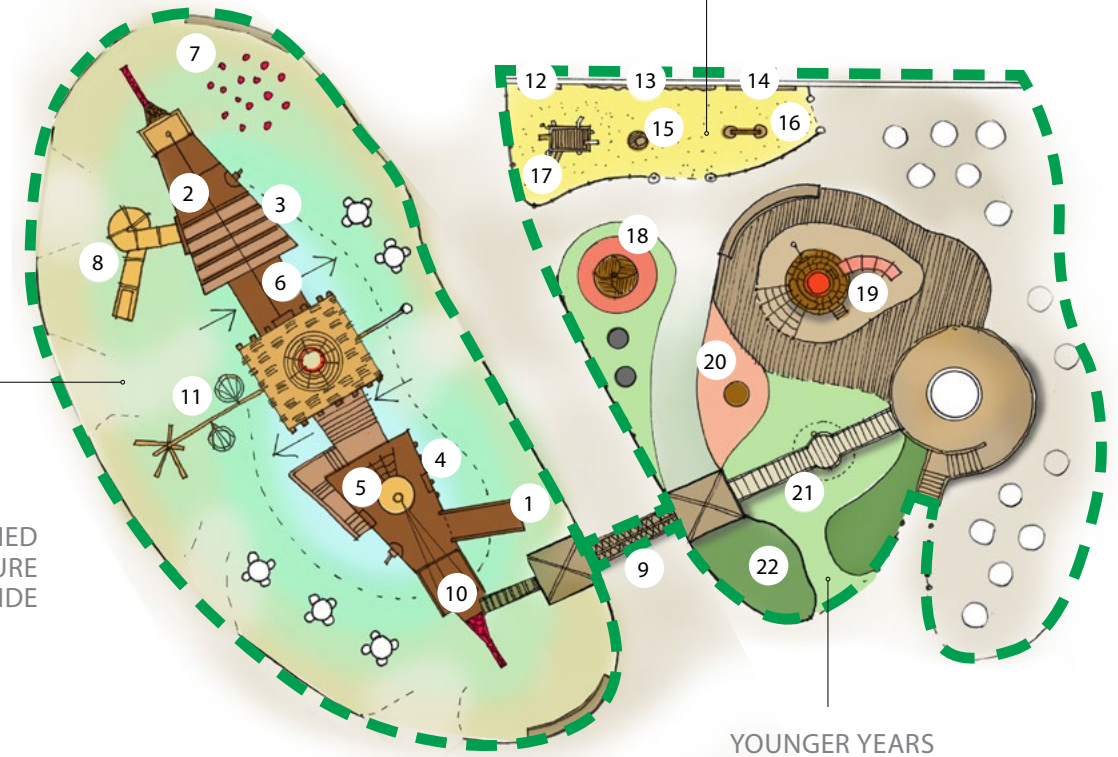
INTERACTIVE WATER PLAY



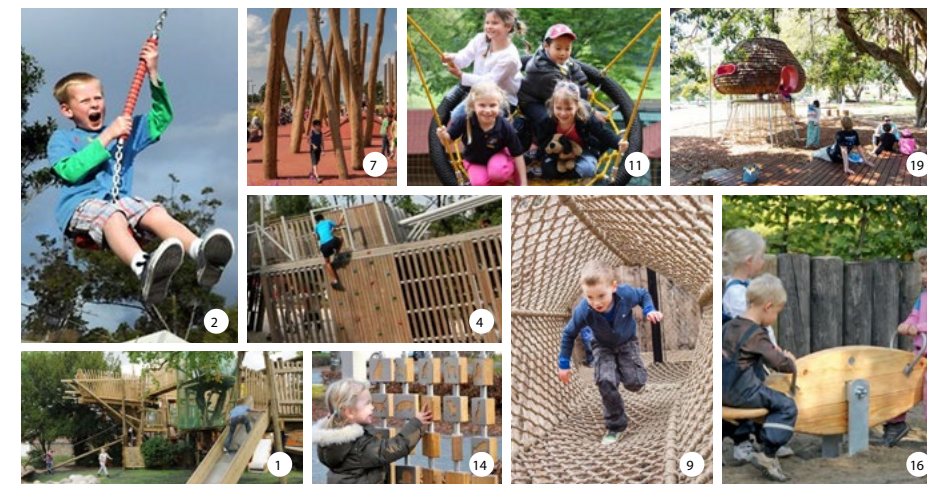
EXPERIENCE

- 1 Steel or timber slide
- 2 12m flying fox
- 3 Tunnel through boat hull (TBD)
- 4 External theming and climb section (TBD)
- 5 Vertical climb net to look-out tower (TBD)
- 6 View of internal platform (TBD)
- 7 Tall timber poles with climb holds
- 8 Steel or timber slide
- 9 Rope bridge/tunnel
- 10 Revolving top hull section (TBD)
- 11 Birds nest swings

COMBINED
STRUCTURE
AND SLIDE



YOUNGER YEARS



- 12 Extra large chalk board
- 13 Climbing wall
- 14 Activity walls
- 15 Wobble chair
- 16 Sea saw
- 17 Sand building site
- 18 Spin / climb table
- 19 Play house w/ climb under
- 20 Floor trampolines (3)
- 21 Swings under bridge platform
- 22 Wooden animal seats

THIS IS A CONCEPT OF THE PROPOSED PLAYGROUND, WHICH INCLUDES:

- A paddling pool and splash pad with lots of water toys
- Flying fox, climbing frames and slides
- Toddlers' play area with sand and age-specific play structures
- Quieter play areas for adults and children
- An interactive water-play area where children can build and create their own water world

- A dry playground with rope ladders, towers, tunnels, swings, slides and trampolines
- Lots of seating, shading and quiet areas for relaxation
- Accessible play equipment for children of all ages and abilities
- Countouring and structures to keep the wind at bay

ACCESSIBILITY PLAY KIT

- Quiet spaces
- Inclusive play components for the disabled

