

ENGAGEMENT

QUESTIONS AND ANSWERS

WHO WILL RUN THE HOT POOLS?

The Council will remain the owner of the hot pools and a commercial leisure operator sought to run the pools. The operational details will be negotiated once this operator is on board. DCL and the Council are aware that entry prices will need to stay affordable. It is likely there will be a fee structure that includes reduced entry for Christchurch residents and Community Services Card holders.

WHAT ABOUT CAR PARKING?

Existing car parking is well used in the summer months, but less so for the rest of the year. The site for the hot pools ensures that car parking is available by the beach. Although some spaces will be lost, a wider review of car parking around the entire New Brighton commercial area has been carried out to address future demand.

HOW ARE THE POOLS BEING FUNDED?

The Council has allocated \$19.2 million for the hot pools, playground, coastal protection, car parking, and a contribution towards the surf club rebuild. This is made up of \$5 million previously set aside for a legacy project, \$3 million for the playground, \$1 million for the surf club, and the remainder for the hot pools and associated work.

HAVE YOUR SAY ON PUBLIC SPACES

You can also have your say on Christchurch City Council's proposals to improve Marine Parade and Brighton Mall. You can find more information about this consultation at www.ccc.govt.nz/haveyoursay. This consultation also runs until 5pm, 10 November 2017.

WHEN WILL CONSENT BE LODGED?

Feedback from this engagement process and previous consultations will be used to inform the final design of the hot pools. The development will then require notified resource consent from the Council and Environment Canterbury. Preliminary discussions are already underway.

Resource consent applications will likely be lodged by the end of the year and will take several months to finalise. Construction and opening timelines are subject to consent approvals.

WHAT ABOUT THE SURF CLUB?

The \$19.2 million for the hot pools and playground includes assistance for the rebuild and potential relocation of the New Brighton Surf Life Saving Club. The club is working on plans for its rebuild and will decide soon if this includes relocating further south, next to the hot pools. Should the decision be made to relocate the surf club, the existing site could be used for new car parking, subject to resource consent.

TIMELINE

NOV '16	Community consultation
MAR '17	Annual Plan consultation
OCT / NOV '17	Community engagement on design ideas
LATE '17	Resource consent lodged
	Further designs available
MID '18	Work underway (subject to consent)

PUBLIC ENGAGEMENT

CHRISTCHURCH HOT POOLS

OCTOBER 2017

Development Christchurch Limited (DCL) is looking for your feedback on early design ideas.

The idea for a hot pools complex was raised by residents during the New Brighton Suburban Centre Master Plan engagement process.

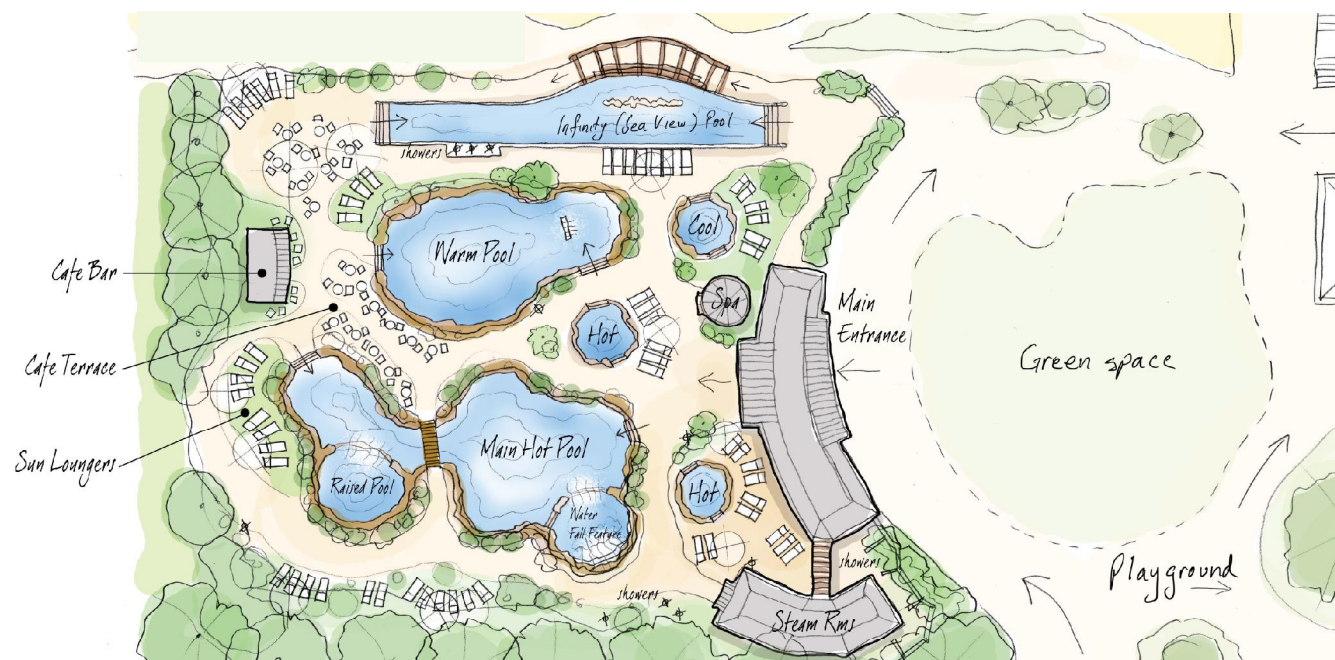
The aim is to create a regional attraction that kick-starts New Brighton's revitalisation, drawing people into the village centre and supporting the wider New Brighton Regeneration Project, including the playground, improvements to public spaces, transport and car parking, residential development and the surf club rebuild.

Plans are based on hundreds of ideas raised during past community consultations, which supported the project and ensured Christchurch City Council funding.

People said they wanted the hot pools to be a place for locals and visitors to relax and enjoy. Design ideas focus on this feedback with the aim of creating an inclusive, flexible space designed around the natural environment and reflecting the desire for a family friendly facility.

Now we'd like to hear your thoughts – take a look at the early details and let us know what you think by 5pm, 10 November 2017. Use the response form provided or go online to www.ccc.govt.nz/haveyoursay.

Feedback will inform more detailed design. We will continue to involve the community as work progresses.



Marine Parade

Design ideas

ENGAGEMENT

OCTOBER 2017

KEY THEMES

FLEXIBLE

With a predicted peak demand of 100,000 visitors a year, the hot pools must meet a wide range of needs. Different pools will offer different experiences – some will be quiet, some active, and others create a family environment. There will be a range of pool temperatures.

FAMILY FRIENDLY AND INCLUSIVE

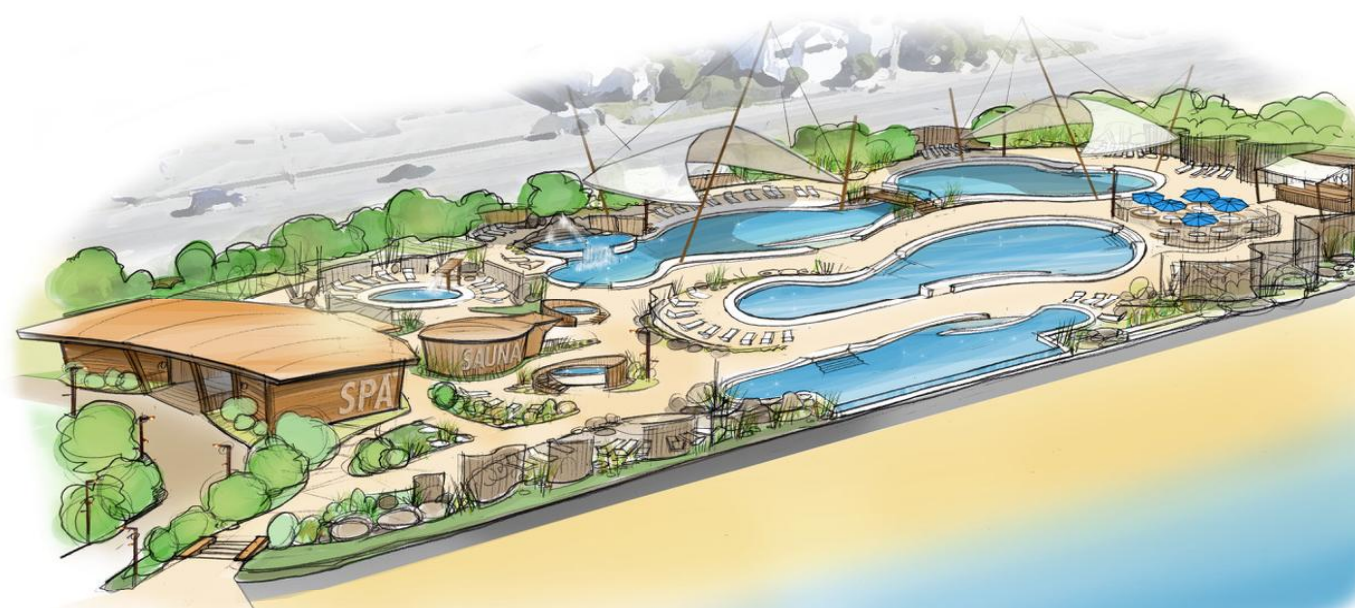
The Christchurch Hot Pools will be designed for everyone to enjoy. Care is being taken to apply modern accessibility standards to the whole design while all changing rooms, toilets, and communal areas will consider all visitors.

A DESTINATION

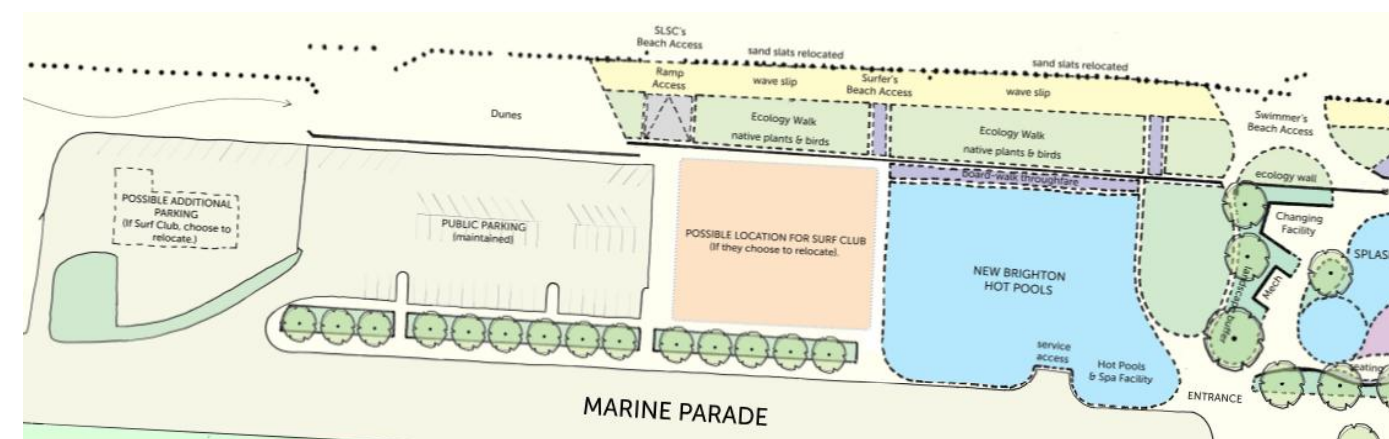
The hot pools will be a regional destination for visitors and locals alike, drawing people from the city and surrounds to the seaside. We will create a unique attraction that doesn't compete with nearby attractions such as the Eastern Recreation and Sports Centre.

ENVIRONMENTAL INTEGRATION

People have told us it's important the pools reflect their coastal surroundings. The design is influenced by the local environment, and there will be easy links to the beach.



Artist's impression



Foreshore development vision

NATURAL MATERIALS

The use of natural materials such as timber, stone, and glass will be key components of the design.

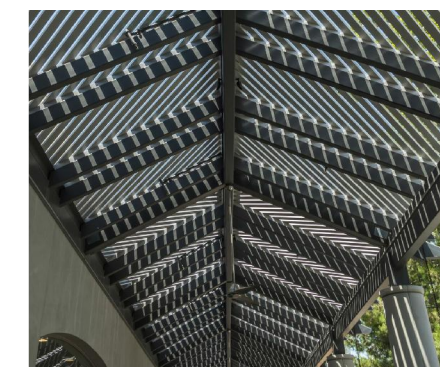
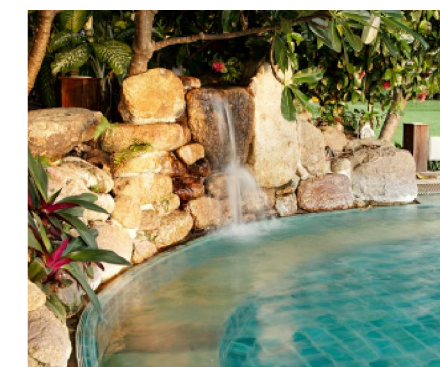
PROTECTION FROM THE ELEMENTS

Links to the beach will be balanced with the need for protection from the wind and cool temperatures. Thermal comfort technology is being used to inform the creation of micro-climates within the complex to make the most of the sun and protect from the wind and rain.

CULTURAL NARRATIVE

DCL is working with Matapopore and Ngāi Tahu to introduce cultural influence into the design. This will help link the pools to the history and cultural identity of the surrounding area.

The community's desire for connection to the environment will be achieved through a generally open design, while some areas will be partially covered.



Theming – look and feel

LOCATION

The hot pools will be located on the foreshore, next to the new playground. Links to Marine Parade and Brighton Mall are an important part of the design – we want to encourage people to wander across to the local village, stop and have a coffee or lunch, and do some shopping.

COASTAL PROTECTION

Protection from coastal inundation and erosion, including improvements to the existing stone sea walls, will be included in the project.